



Industrial Hygiene • Air Quality • Lead & Asbestos • Training • Health & Safety

## 2012 ASBESTOS HAZARD EMERGENCY RESPONSE ACT (ASHERA) 3-YEAR RE-INSPECTION REPORT

Conducted at:

EUCLID ELEMENTARY SCHOOL  
1120 SOUTH EUCLID AVENUE  
ONTARIO, CALIFORNIA 91762

Prepared for:

MR. CRAIG MISSO  
DIRECTOR FACILITIES, MAINTENANCE AND OPERATIONS  
ONTARIO-MONTCLAIR SCHOOL DISTRICT  
950 WEST D STREET  
ONTARIO, CALIFORNIA 91762

Prepared by:

EXECUTIVE ENVIRONMENTAL  
310 EAST FOOTHILL BOULEVARD, SUITE 200  
ARCADIA, CALIFORNIA 91006

Project Number EE 12-Z0151-0010  
March 15, 2012

Report assembled by:

Yesenia Galeana  
Technical Report Writer  
Executive Environmental

Report generated/reviewed by:

Tim Galeana, CAC # 98-2470  
Senior Project Manager  
Executive Environmental

## TABLE OF CONTENTS

- I. EXECUTIVE SUMMARY
- II. SURVEY RESULTS REPORT
- III. SITE MAP
- IV. INSPECTOR'S CERTIFICATIONS
- V. DISCLAIMER/REPORT LIMITATIONS

## I. EXECUTIVE SUMMARY

## I. Executive Summary

In February 2012, Executive Environmental (EE) performed a re-inspection for asbestos-containing building materials (ACBMs) at Euclid Elementary School, located at 1120 South Euclid Avenue, Ontario, California. The purpose of the re-inspection was to comply with the U.S. Environmental Protection Agency (EPA) Code of Federal Regulations, Title 40, Section 763, Asbestos Hazard Emergency Response Act (AHERA) three-year re-inspection requirement.

Prior to the re-inspection, previous inspection reports were reviewed in order to determine which building materials had been previously tested and found to contain asbestos, which materials were determined not to be asbestos-containing, and whether any materials had not been tested for asbestos.

After the review of the previous building inspections, a complete visual walk-through inspection of the site was performed. The inspection revealed that conditions at Euclid Elementary School have changed since the last inspection in 2009. Previously unidentified materials have been added to the AHERA documentation.

Below is a list of ACBMs present within each portable:

### Portable: Room 27

- All interior building materials are assumed to be asbestos containing.

Remaining asbestos-containing materials located throughout the school were intact and in good condition at the time of the re-inspection. To ensure the materials' integrity and continued good condition, it is recommended that friable materials be placed on the school's Operations and Maintenance (O&M) Program. Periodic surveillance at six-month intervals is also recommended for all materials. Material descriptions and locations can be found in Section II (Survey Results Report), along with additional information for each material.

No ACCMs have been identified in Portables C1 (P1), C2 (P2), C3 (P3), C4 (P4), C5 (P5), C6 (P6), C7 (P7), C8 (P8), C9 (P9), E1 (P10), E2 (P11), E3 (P12), F1 (P13), or F2 (P14), which were manufactured by Aurora Modular Industrial, Modular Structure, or Silver Creek Industrial. The District has manufacture letters to the effect that no ACBMs were used in the construction of the portables; these portables are exempt from the AHERA inspection.

If you have any questions, or if EE can be of further assistance, please contact our main office at (626) 441-7050.

## II. SURVEY RESULTS REPORT

**EUCLID ELEMENTARY SCHOOL  
2012 AHERA 3-Year Re-Inspection**

Building	Location	Material	Quantity	Type <sup>A</sup>	Friable Cond. <sup>B</sup>	Response <sup>C</sup> Action	Notes
Building A	Library Office	12"x12" white with green floor tile					Removed prior to 2004 AHERA.
Building B	Cafeteria and Room 20	Plaster wall					Removed prior to 2004 AHERA.
Portable Classrooms	Room 27	All interior building materials	All	Misc.	G	PS	All interior building materials assumed to be asbestos containing
Portable Classroom	Room 28	Vinyl sheet flooring					Portable no longer onsite.

<sup>A</sup> Misc. = Miscellaneous; Surf. = Surfacing; TSI = Thermal System Insulation

<sup>B</sup> G = Good; D = Damaged; SD = Severely Damaged

<sup>C</sup> PS = Periodic Surveillance; O&M = Operations & Maintenance Program; R = Removal

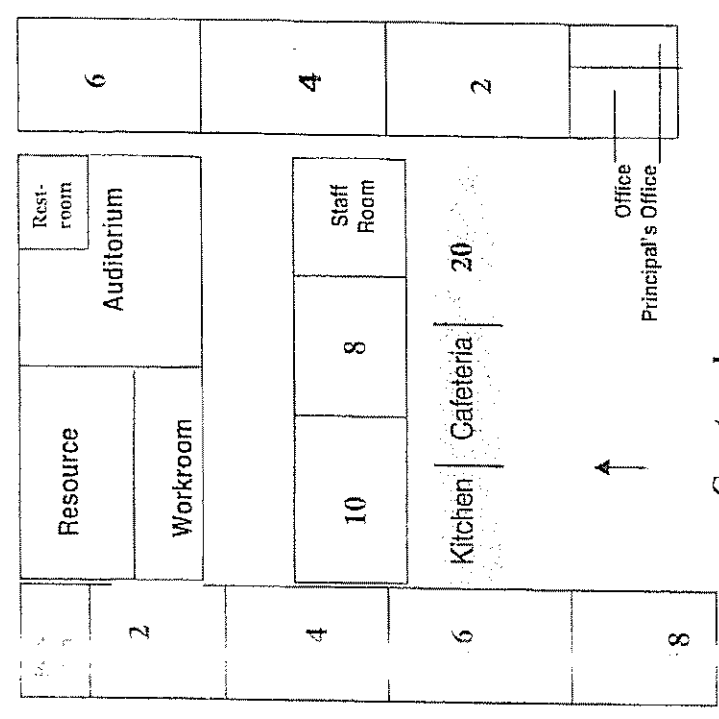
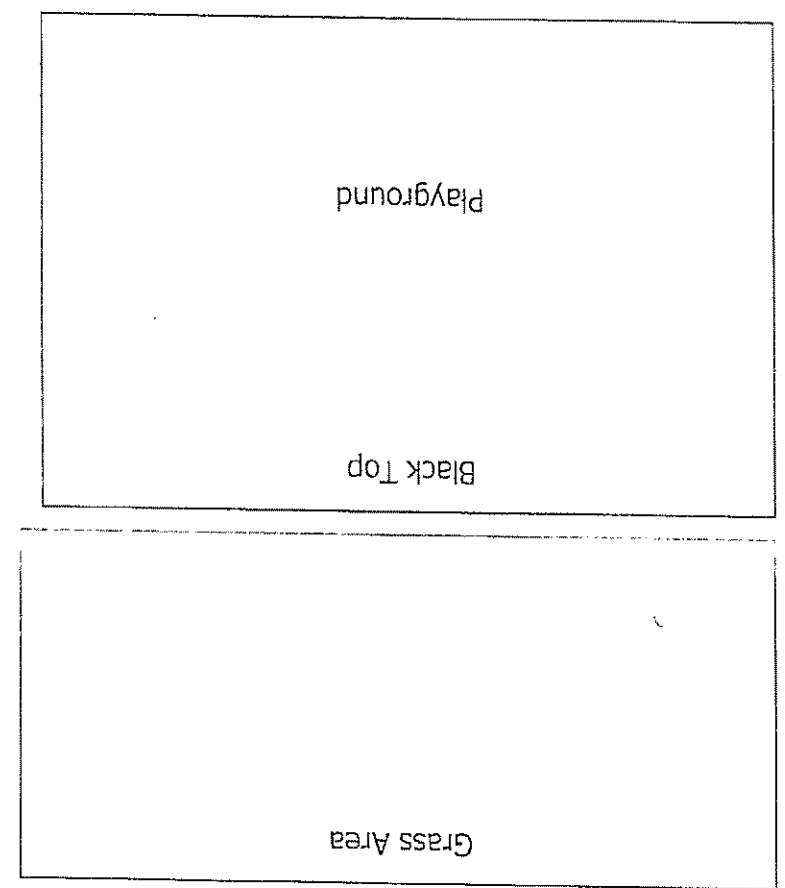
### III. SITE MAP

Ralston Street

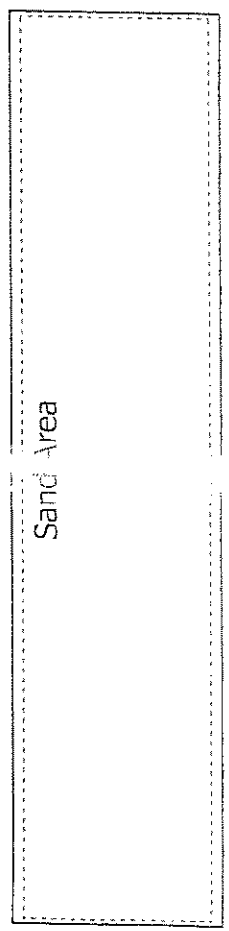
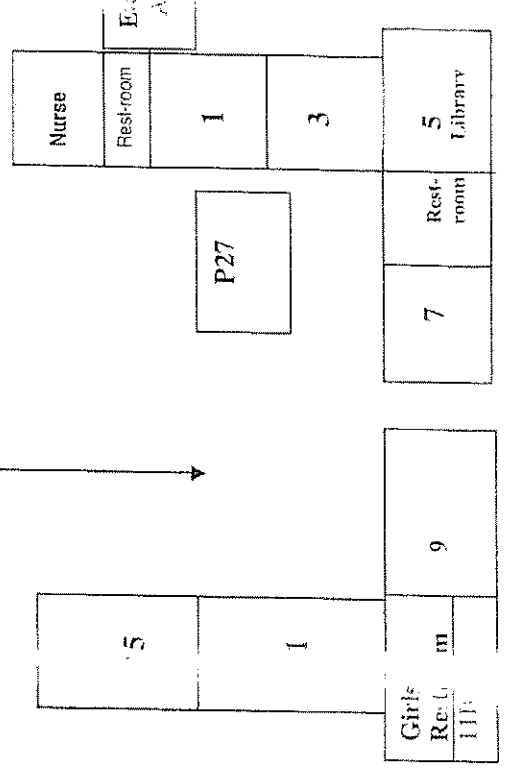
- P 12
- P 11
- P 10
- P 9
- P 8
- P 7
- P 6
- P 5
- P 4
- P 3
- P 2
- P 1

P13

P14



Courtyard



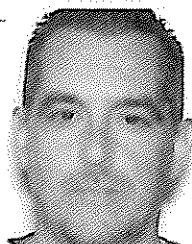
**EUCLED ELEMNTARY SCHOOL**  
 1120 S. Euclid Ave. Ontario CA 91762

Belmont Ave



#### IV. INSPECTOR'S CERTIFICATIONS

State of California  
 Division of Occupational Safety and Health  
**Certified Asbestos Consultant**



**Timothy D Galeana**

Name  
 Certification No. **98-2470**  
 Expires on **11/16/12**

This certification was issued by the Division of Occupational Safety and Health as authorized by Sections 7180 et seq. of the Business and Professions Code.

## Certificate Of Completion

### Asbestos Building Inspector Refresher Course

DOSH #:CA-015-06


**Tim Galeana**

ABIR0210120007N2015

**John Vreeland**

---

Principal Instructor


---

**John Brown**  
 Training Director

2/10/2012  
Course Start Date

2/10/2012  
Course End Date

2/10/2012  
Exam Date

2/10/2013  
Expiration Date

This course satisfies the education requirements for Asbestos accreditation under the Toxic Substances Control Act, Title II. This course has been approved by the Department of Industrial Relations, Division of Occupational Safety and Health of the State of California

**NATEC International, Inc.**

National Association of Training and Environmental Consulting

1100 Technology Circle- Suite A, Anaheim, CA 92805 • www.natecintl.com • 800-969-3228

**Important Industry Contacts**

CAL OSHA Phone: (916) 574-2593  
 Fax: (916) 483-0522 Fax Northcaron  
 Website: www.dhs.ca.gov/calosha.com

DHS/CLPPB Fax: (510) 622-5000  
 Website: www.dhs.ca.gov/childlead

SCAQMD Fax: (909) 396-3739  
 Fax: (909) 396-3342 (Fax)

**NATEC International, Inc.**

National Association of Training and Environmental Consulting  
 Anaheim, CA | Oakland, CA | Marianas & Guam

---

**Asbestos Lead, Mold, HAZWOPER**

P.O. Box 25205 Anaheim, CA 92825-5205  
 (714) 678-2750, (800) 969-3228, Fax (714) 678-2757  
 www.natecintl.com

**NATEC International, Inc.**

National Association of Training and Environmental Consulting  
This Card is not valid for purposes of certification and is not accepted by DSHAWD as proof of certification.

This Card Acknowledges That  
**Tim Galeana**

Holds Training Certification for  
**Asbestos Building Inspector Refresher Course**  
(Valid for 12 months)

Training Date: **2/10/2012**  
 Certificate No: **ABIR0210120007N2015**      **John Brown**  
 Training Director

## V. DISCLAIMER/REPORT LIMITATIONS

## V. DISCLAIMER/REPORT LIMITATIONS

All reports and recommendations are based on conditions and practices observed and information made available to Executive Environmental (EE) by the client and the designated sites/facilities on the days the inspection was completed. This report does not purport to set forth all hazards, nor to indicate that other hazards do not exist. No responsibility is assumed by EE for the control or correction of conditions or practices existing at the facilities, or at any other premises surveyed by EE, for and on the behalf of the client. Services provided by EE shall be governed by the standard of practice for professional services measured at the time those services are rendered.

All information contained in this report is proprietary and limited to the scope of services, parameters of the analytical methods used and the conditions present at the time of this inspection. Any references to quantities are considered estimates and are not to be construed as actual.